

'Birmingham's hidden gem'.



One of the remaining allotments

The Moor Pool Hall and tennis courts.



Moor Pool Hall bookings

Call 0121 428 4644 for information.

- Historic example of Arts and Crafts design.
- Open space including allotments between houses: integral part of original design.
- Winding roads and open space vistas harmonise with natural terrain features.
- Wide range of community facilities and activities available for use.
- Birmingham's hidden gem.



May Day celebrations 1910

Events

April
Scarecrow Competition.



September
Moor Pool Festival Open Day.

December
Moor Pool Carol Walk.

Location.

NW of Harborne High St, bordered by Lordswood Wentworth and Park Hill Road.

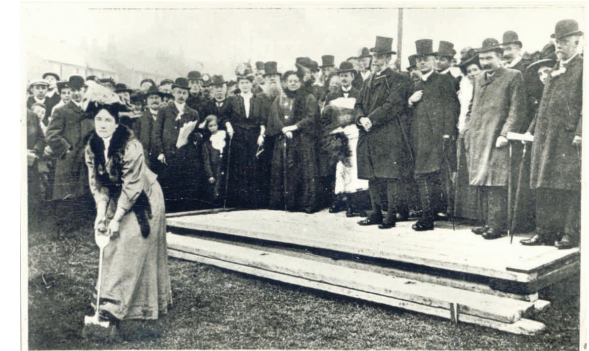


Moor Pool Residents Association

www.moorpool.com

Moor Pool Residents Association

Welcome to Moor Pool.



THE CUTTING OF THE FIRST SOD.
Sod cutting ceremony 1907

Birmingham's Historic Garden Village.

Founded by John Sutton Nettlefold, First Chairman of The Town Planning Committee of Birmingham City Council.

www.moorpool.com

Moor Pools History

Designed by Martin and Martin, highly respected Birmingham architects, the Moor Pool Estate was highly praised by experts in the Garden City movement at the time. Founded to promote the erection, co-operative ownership and administration of houses on the lands at Moor Pool, substantially built houses would be built and let at ordinary rents to pay a moderate amount of inter-

The Martin & Martin Bell Edison telephone building in Newhall St.



est on the capital. After expenses the surplus profits would be divided in shares amongst the tenant members in proportion to the rents paid by them. This had great benefits to the tenant but also provided a secure basis for capital funding for the Investors. To many at the time this was a radical concept and there was doubt that the Estate would be sufficiently viable to

The Wooden Skittle Alleys.

Only 2 such examples with both a flat and a crowned alley are believed to exist.



survive. They were proved wrong, and the Estate is celebrating the Centenary of the period in which it was built 1907-1912.

As an example of community planning Moor Pool was indeed radical. It contrasted starkly with the back-to-back housing within the City and was Nettlefolds vision of an alternative way forward. Building work followed the undulating contours of the land and provided a range of community facilities unheard of elsewhere in the City. The gardens and allotments provided a much healthier environment with mortality rates far lower than expected. As Birmingham grew the lands surrounding Moor Pool were developed leaving this unique enclave which has survived remarkably intact to this day. Moor Pool as an example of town planning is still exemplary.

Community Facilities.

Moor Pool has a range of community facilities. Originally intended to serve the Tenants of the Estate these are now accessible to members outside the Moor Pool conservation area. These include the upper and lower Moor Pool Halls, the Skittles Alley, Tennis Clubs, Bowling Club, Fishing

The Moor Pool Players performing on stage in the Moor Pool Hall.



Club, Snooker Club, Air Rifle Club and Allotments. In addition many other clubs and societies use the Hall for events. Further details are available from the website.

Winterbourne Botanic Gardens

Moor Pool has strong links with Winterbourne which was the family home of John Nettlefold. Winterbourne, supported by the Heritage Lottery Fund, are refurbishing Winterbourne House with items reflecting Nettlefolds life. This may include artifacts from the Moor Pool historic collection. They are also creating an oral history archive which will capture memories from Moor Pools older residents and others connected with GKN.

The gardens are open to visitors at various times.

Call 0121 414 3832 for information.

www.botanic.bham.ac.uk

The English Heritage listed flats on Ravenhurst Road.



Moor Pool Residents Association

Moor Pool Residents Association.
64, Margaret Grove,
Harborne,
Birmingham, B17 9JL.

www.moorpool.com